

The Personal Learning Device (PLD) Initiative

Parent Engagement

Sat, 20 Jan 2024

A PRESENTATION BY
MINISTRY OF EDUCATION, SINGAPORE

OFFICIAL (CLOSED)/ NON-SENSITIVE

Agenda

1. Introduction: National Digital Literacy Programme (NDLP) and Personal Learning Device (PLD) Initiative by MOE
2. Technology-Enabled Learning @ Boon Lay Secondary (BLS)
3. Supporting Students in the Safe and Effective Use of the Devices
4. Device & Funding Information 2024
5. Timeline
6. Q&A

The National Digital Literacy Programme and the PLD Initiative

An Overview

The National Digital Literacy Programme (NDLP)

1. The NDLP was launched in March 2020 to help students **strengthen their digital literacy and acquire digital skills** needed to navigate an increasingly digitalised world.
2. Under the NDLP, every secondary school student will **own a school-prescribed Personal Learning Device (PLD)**. Singaporean students may use funds from their Edusave Account to pay for the PLD.

Intended Outcomes of the PLD Initiative

The use of the **PLD** for teaching and learning aims to:



Support the Development of Digital Literacy



Support Self-Directed and Collaborative Learning



Enhance Teaching and Learning

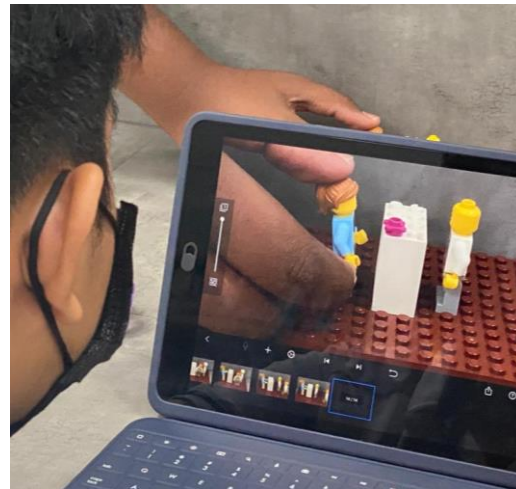
Technology-Enabled Learning @ Boon Lay Secondary



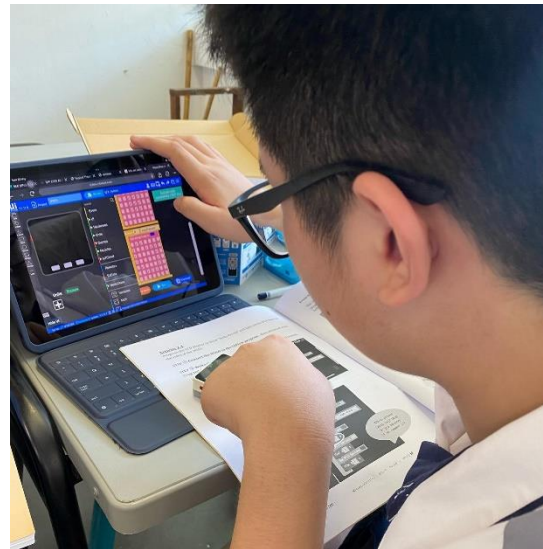
How will your child/ward use their PLD?

At Boon Lay Secondary School, your child/ward will be using their PLDs to:

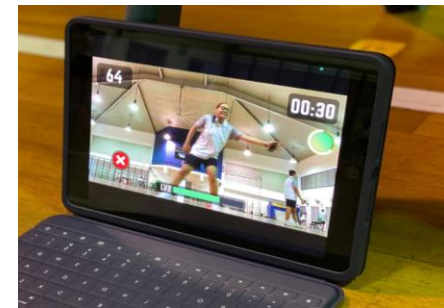
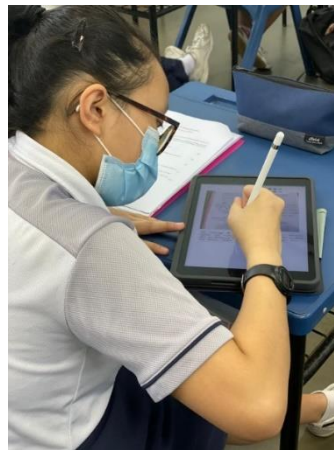
Create, Connect & Contribute



Leveraging Technology to Enhance Teaching & Learning



Nurturing self-directed and collaborative learners



Active Learning Beyond the Classroom



Supporting Students in the Safe and Effective Use of the Devices

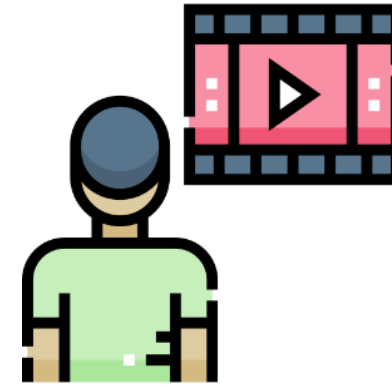
Cyber Wellness Concerns



Harmful Online Content



Distraction from Learning



Excessive Screen Time

Supporting Students in the Safe & Effective Use of their Devices



Device Management Application (DMA)

PERSONAL LEARNING DEVICE
5P ROUTINES

PREPARE

- Charge your iPad and Apple Pencil at home
- Bring iPad, Apple Pencil and Earpiece
- Log onto SSQEZ WIFI

PARTICIPATE

- Have Good Netiquette
- Collaborate Ethically and Responsibly

PRACTISE

- Practise managing your schedule using Google Calendar
- Review your work to be completed *daily!*
- Practise managing your Digital Files using Google Drive
- File them *weekly!*
- Practise Notetaking using OneNote

PAUSE

- Place your iPad face down when your teacher requires you to do so
- Take an Eye Break every few minutes so that your eyes won't be strained

PROTECT

- Protect your Personal Learning Device
- Have sight of it! Keep it! Lock it!
- Protect your Passwords for iPad and Accounts

Classroom Management & 5P Routine



Cyber Wellness Education in CCE & School-based Programmes

- Cyber Use – Balance use & Self Control, Online Safety*
- Cyber Identity – Social Media use*
- Cyber Relationships – Bullying & Being a Positive Influence*
- Cyber Citizenship – Handling Online Falsehoods*
- Cyber Ethics – Intellectual Property Rights*



Strong Partnerships with Parents

Device Management Application (DMA) Installation

- Your child's/ward's PLD will be installed with a DMA to provide a safer digital environment for learning.
- **The installation of DMA applies to both devices purchased through the school and any student-owned devices that parents/guardians opt for the student to use in lieu of the school-prescribed PLD.**
- The DMA will be funded by MOE and will be uninstalled from the device when your child/ward graduates/leaves the school.

Key Components of the DMA

Mobile Device Management Service (MDM)

Protects the PLD from viruses and allows the installation of relevant apps for learning

Usage Management Service (UMS)

Protects students from harmful online content, and sets helpful limits on the use of the PLD

Classroom Management Service (CMS)

Helps teachers manage devices during lessons, and to easily share relevant apps, websites and lesson materials

Data Collected by the DMA

The DMA does **NOT** collect any of the following data:

- Login IDs and passwords entered into websites or into any applications
- Actions performed (e.g. posts, online comments, items added to a shopping cart, etc.) when visiting websites and using apps
- Documents and photos stored in the PLDs
- PLD location
- Webcam videos and microphone recordings

Data Security

- All user data collected through the DMA will be **stored in secure servers** managed by appointed DMA Vendors with stringent access controls and audit trails implemented. The DMA solutions used are cloud-based Software-as-a-Service (SaaS) solutions and are trusted solutions that have been operating for many years. They have also been subject to **regular security review and assessment** by independent reviewers.
- DMA solutions have **sufficient security robustness** to ensure data collected are properly stored and protected. MOE will also subject the DMA Vendors to regular audit on the security of the system based on tender requirements.
- To prevent unauthorised access, DMA Administrators and DMA Vendors will be required to access their accounts using **2-factor authentication** or the equivalent to ensure proper accountability for information access and other activities performed. There will be regular account reviews and audits for DMA Administrators' and DMA Vendors' accounts.

In-School DMA Settings (Default)

Schools will determine DMA settings for **in-school use**.

As a default, these settings will continue to be in place after school as well:

- MOE and the school will set the level of web content filtering, including filtering out objectionable content or content that may not be conducive to teaching and learning (e.g. social media, pornography, gambling, or websites containing extremist content)
- Students will be able to use the device from **6 am – 11pm** daily
- The school will determine the apps and programs to be installed to support teaching and learning

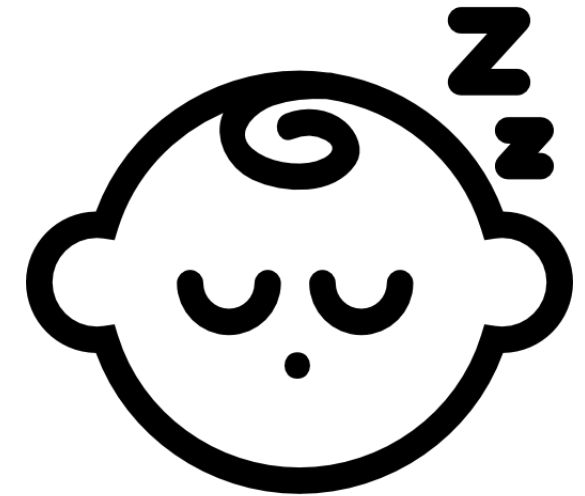
Overview of DMA Settings (Regular School Days & School Events)



School Hours
6am – 5pm



After-School Hours
5pm – 11pm



Sleep Hours
11pm – 6am

Overview of DMA Settings

(Weekends, School and Public Holidays)



After-School Hours
5pm – 11pm

Providing Parents/Guardians with Greater Choice of After-School DMA Parent Options



The following tables outline the different levels of restrictions, controls, and monitoring for the different DMA options after school hours.

Default	Option A	Option B
<p>In-school DMA settings will continue after school hours</p>	<p>Parents/Guardians can modify the DMA settings after school hours</p>	<p>Parents/Guardians can choose to disable DMA after school hours</p>
<p>For parents/guardians who want their child’s/ward’s use of the device to be restricted only to teaching and learning, and prefer to leave it to the school to decide on DMA settings after school hours.</p>	<p>For parents/guardians who want more leeway over the use of the device, and prefer to take charge of the level of restrictions for their child’s/ward’s use of the device after school hours.</p>	<p>For parents/guardians who do not want their child’s/ward’s use of the device to be regulated by DMA after school.</p>

- **Having default school settings continue after school hours is the best option for parents/guardians who prefer not to, or do not feel ready to manage their child’s/ward’s device use on their own.**
- Parents/guardians can request to change their choice of DMA settings at any time.

Providing Parents/Guardians with Greater Choice of After-School DMA Parent Options



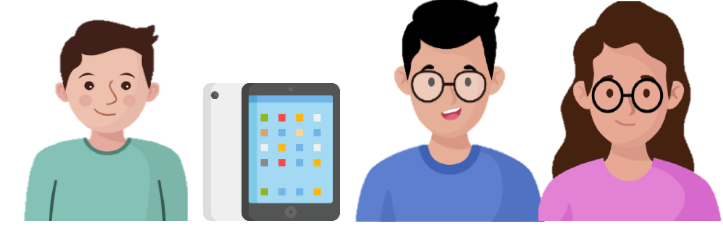
	Default	Option A	Option B
Protecting students from objectionable content	MOE/school sets level of web content filtering	Parents/Guardians can apply additional content filtering	No content filtering
Reduce distractions from learning through control of applications	Parents/Guardians and students are <u>unable</u> to install additional applications	Parents/Guardians and/or students can install additional applications after school hours, but these applications are disabled during school hours	
Limit screen time	School sets hours during which students are able to use the device online	Parents/Guardians can modify the amount of screen time	No control over screen time

Providing Parents/Guardians with Greater Choice of After-School DMA Parent Options



	Default	Option A	Option B
Parent/guardian account	Provided to allow monitoring of PLD activities after school hours		Not provided
Monitor students' cyber activities	Parents/Guardians can track their child's/ward's browser history after school hours		<p>Parents/Guardians will <u>not</u> be able to monitor or control their child's/ward's use of the device through the DMA after school hours</p> <p>No data will be collected during use of PLD after school hours</p>

Deciding on the Choice of After-School DMA Parent Option



Parents/guardians may wish to consider the following questions before deciding on which After-School DMA Parent Option is best for your child/ward.

1. Child's/ward's current device usage habits

- How much time does my child/ward spend on their device?
- How well is my child/ward able to regulate their device usage on their own?
- Does my child/ward get easily distracted while doing online learning?

2. Parents'/Guardians' involvement

- How confident and familiar am I with managing my child's/ward's cyber wellness?
- Are there existing routines and open conversations on the use of the Internet at home?
- Am I aware of how to prevent different types of cyber threats that my child/ward might face?

Parents'/Guardians' Role

- We would like to **partner parents/guardians** so that that students are well supported in their use of technology for learning.
- As parents/guardians, you can help in the following ways:
 - **Model good digital habits** for your child/ward e.g. parents/guardians not using devices during family meals.
 - **Know** your child/ward well, and **have conversations** with your child/ward about safe and responsible use of technology.
 - Discuss and **come up with ground rules for internet/device usage** that both your child/ward and you can agree with.
 - Encourage your child/ward to **use productivity tools using his/her PLD**, to organise information and simplify tasks for efficiency.

Additional Resources for Parents

To support you in keeping your child/ward safe online, you may refer to these additional resources:

- Parent Handbooks (I) and (II) on Learning with a Personal Learning Device (shared by the school)
- Parent Kit on Cyber Wellness for Your Child (<https://go.gov.sg/moe-cyber-wellness>)
- Parent Kit on Raising a Digitally Smart Child (<https://go.gov.sg/moe-raising-a-digitally-smart-child>)
- Parenting with MOE: Instagram Live session on Raising Digitally Smart Kids (<https://go.gov.sg/iglive-raising-digitally-smart-kids>)
- Schoolbag article 'Keeping our teens safe online' (<https://www.schoolbag.edu.sg/story/keeping-our-teens-safe-online>)
- MOE Cyber Wellness Programme (<https://www.moe.gov.sg/education-in-sg/our-programmes/cyber-wellness>)
- Media Literacy Council's Resources for Parents (<https://go.gov.sg/better-internet-sg>)
- National Library's Learning & Information Literacy Resources (<https://sure.nlb.gov.sg/>)
- TOUCH Community Services (<https://help123.sg>)

Device and Funding Information

Boon Lay Secondary's PLD

We chose the iPad because:

- ✓ Portability (Light-weight: ~500g without case)
- ✓ Durability with Rugged Case
- ✓ T&L Affordances
 - Use of Stylus: Apple Pencil
 - Typing using Keyboard
 - Multimedia Editing



Boon Lay Secondary's PLD

Apple iPad 10.9" 10th Gen

- **Processor:** A14 Bionic Processor
- **Memory (GB):** 4GB
- **Storage (GB):** 64GB
- **Accessories:** Apple Pencil (USB-C) & Logitech Ruggedized Combo 4
- Includes 3-year **insurance coverage!**



Insurance Coverage

The package includes a 3-year warranty and insurance which includes:

Insurance Coverage	Claimable
<ul style="list-style-type: none">• Fire• Lightning• Power Surges• Accidental e.g water spillage, drop etc• Theft due to forcible entry• Robbery <p>* Accidental loss <u>will not</u> be covered by insurance.</p>	2 repairs or 1 replacement (3-year insurance)

10th (2022) vs 9th Gen (2021) iPad



Newer Generation (10th Gen) selected because:

- ✓ Larger & Slimmer Display (10.9" vs. 10.2")
- ✓ Faster Chip & Better Performance (A14 vs. A13 Bionic Chip)
- ✓ High Resolution Camera (12 MP vs. 8MP, 4K vs. 1080p video)
 - ✓ USB-C connector (more accessories supported!)
- ✓ Supports new USB C Apple Pencil which attaches magnetically

Technical Support for Students' Devices

Technical support will be provided to students through:

- **Service Desk set up in school (Library, Level 3) during breaks and after school on a weekly basis**
 - Troubleshooting of device issues
 - Solve connectivity issues
 - Collection of devices to be sent for repairs
- **4 Service Centers for repair of devices (hardware issues)**
 - QCD Technology @ Westgate (Jurong East)
 - Apple Retail Store @ Jewel Changi Airport
 - Apple Retail Store @ Orchard Road
 - Apple Retail Store @ Marina Bay Sands

Funding Support for Singapore Citizen (SC) Students

For more details on financial assistance, please approach the school.
Each student would receive a personalised bill subsequently.

SINGAPORE CITIZEN
(Sufficient funds in Edusave)

EDUSAVE

SINGAPORE CITIZEN
(Insufficient funds in Edusave)

EDUSAVE

CASH/ GIRO*

**PR/ INTERNATIONAL
STUDENTS***

CASH / GIRO

*PR/IS with parents whose incomes are below \$4,400 or Per Capita Income (PCI) is below \$1,100 may apply for subsidies → please contact the school directly

What's Next?

Timeline

Time Frame	Activity
By Wed, 24 Jan	<ol style="list-style-type: none"> Submit Purchase of PLD & Selection of After-School DMA Parent Options at Parents' Gateway <div style="background-color: #e0f2f1; padding: 5px; margin: 10px 0;"> <p>Select 'No' if you intend to convert your own iPad for school use</p> </div> Submit MOE's online form https://go.gov.sg/pdlpadmin <i>Parents without access to Singpass can submit their consent via hardcopy, which includes the following:</i> <ul style="list-style-type: none"> <i>Intent to Purchase Personal Learning Device (PLD);</i> <i>Standing Order for Use of Edusave Account; and</i> <i>Authorisation Form.</i>
Thur, 25 Jan – Fri, 26 Jan	Assessment of Suitability of Student-owned iPads (ICT Room @ Library, drop-off during breaks or after-school)
By Wed, 31 Jan	PR/IS with Outstanding Amt: Parent/Guardian to make payment via Giro/PayNow
Term 2	Collection of devices by students <u>in school</u> (strongly recommended)